

# The Kennet

Peltier Favorites Series: Where Urban Meets Suburban

*Customizable...Your Home...Your way!*



4



3



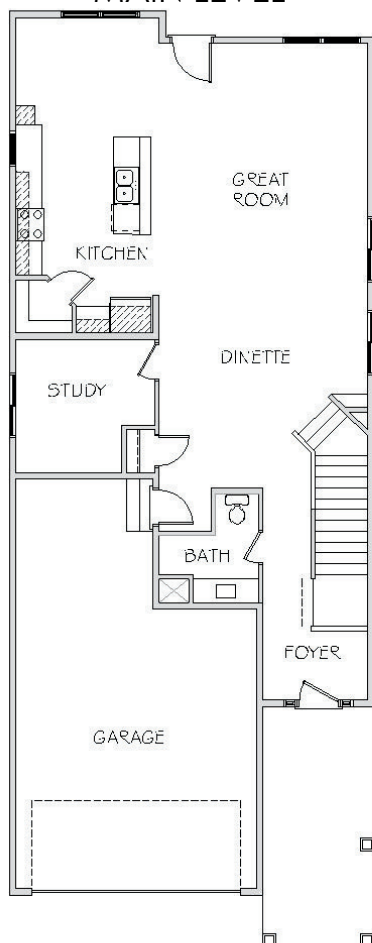
2

2-STORY  
STYLE HOME

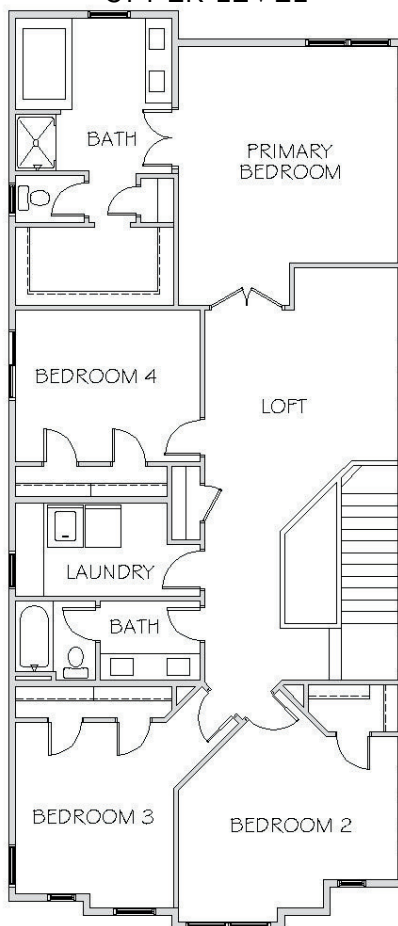
3,022 FINISHED  
SQ FT

UNFINISHED  
LOWER LEVEL

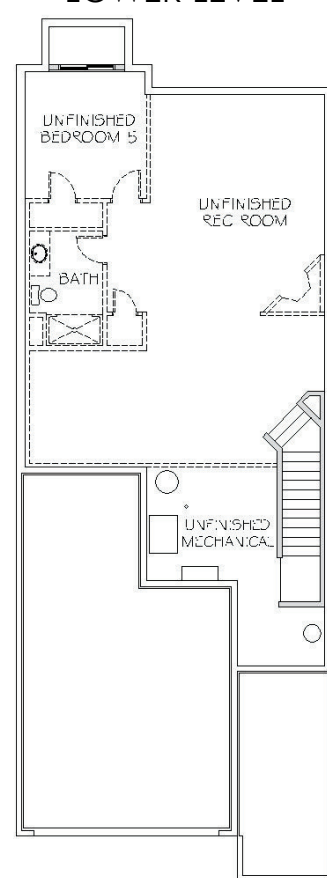
MAIN LEVEL



UPPER LEVEL



LOWER LEVEL



For more information on Peltier Reserve, visit [www.FieldstoneFamilyHomes.com](http://www.FieldstoneFamilyHomes.com) or scan the QR code for a direct link.

Home and community information including but not limited to pricing, plans, features, availability, amenities are all subject to change prior to sale at any time without notice or obligation. Pictures, colors, features, plans and sizes are for illustration purposes only and may vary from homes as built. All dimensions are approximate. Fieldstone Family Homes, Inc. has no control or responsibility as to school changes or assignments, buyer should investigate. Photography, videos and plans are all intellectual property of ©2008 Fieldstone Family Homes, Inc. All homes are constructed by Fieldstone Family Homes, Inc.- MN Lic: BC631164, WI Lic: DC-07080080



## CONTACT DETAILS



952-469-8800



[FieldstoneFamilyHomes.com](http://FieldstoneFamilyHomes.com)



[Info@FieldstoneFamilyHomes.com](mailto:Info@FieldstoneFamilyHomes.com)



952-985-7253



[FieldstoneRES.com](http://FieldstoneRES.com)



[Info@FieldstoneRES.com](mailto:Info@FieldstoneRES.com)

801 Cliff Rd E; Suite 135 Burnsville, MN 55337



FIELDSTONE  
FAMILY HOMES, INC.